

# 801 W. Morgan

FOR LEASE > Office/Retail

Downtown Raleigh



## For Lease – 3,200 SF

- Open floor plan in high-visibility Morgan Street location
- High-profile signage opportunity
- Shell renovations completed 2019
- Walk to downtown Raleigh, Glenwood South, and Hillsborough Street
- Additional space available

For leasing and availability, contact **Ben Steel**  
919-834-8350 | [commercial@empire1792.com](mailto:commercial@empire1792.com)



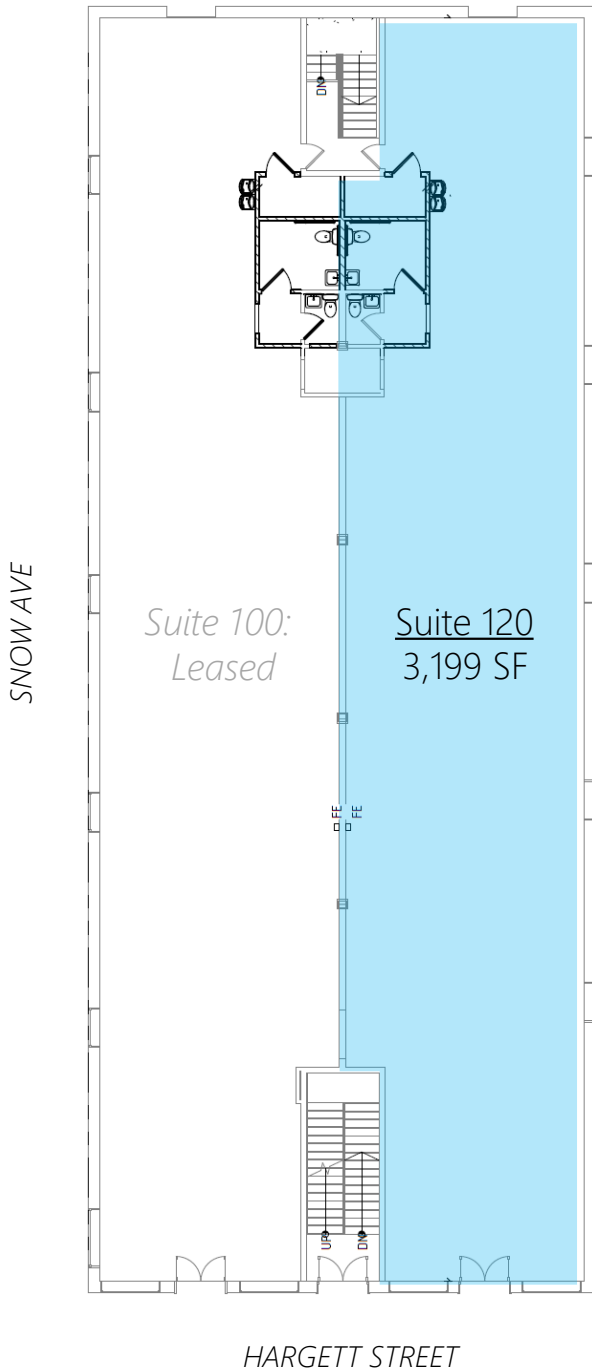
EMPIRE  
PROPERTIES

# 801 W. Morgan Street

FOR LEASE > OFFICE

DOWNTOWN RALEIGH

Morgan Street Ground Floor: 3,199 SF Available



- Upfit-ready suite with full shell renovations completed 2019
- Additional space available in lower level

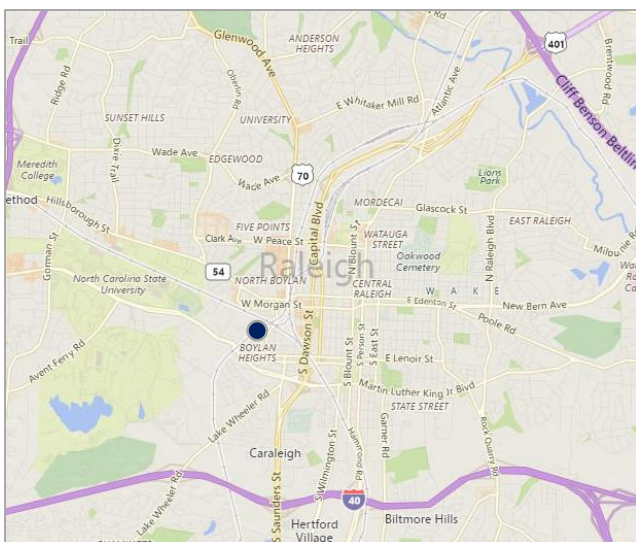
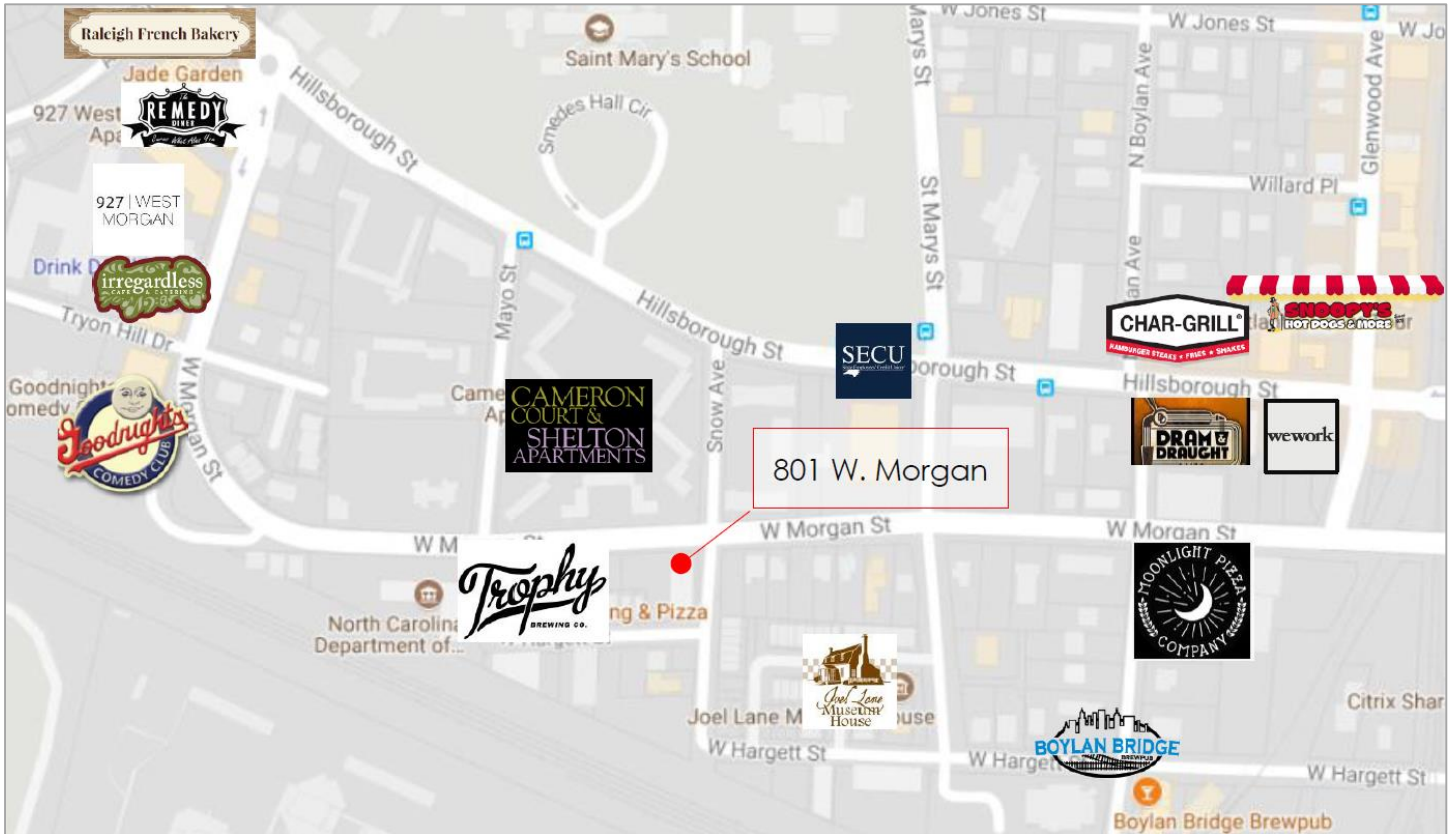
For leasing and availability, contact **Ben Steel**  
919-834-8350 | commercial@empire1792.com



# 801 W. Morgan Street

FOR LEASE > OFFICE

DOWNTOWN RALEIGH



## Location

- Centralized, downtown periphery location in close proximity to the Hillsborough Street, Glenwood South, and downtown Raleigh's Warehouse District
- Corner lot with signage space available
- Steps away from restaurants and entertainment

For leasing and availability, contact **Ben Steel**  
919-834-8350 | commercial@empire1792.com

